

Modular Office at T.H.E. Leadership Academy

File# 37-76

A#04-119299

Temple Heights Leadership Academy

Vista Unified School District

Bid Number: V19200775PWB

ADDENDUM No. 1

July 2, 2020

The following is issued to supplement or revise the Contract Documents. The revisions to the documents are described below. Unless specifically changed by this addendum, the remainder of the drawings, documents, specifications, and bid date/time shall remain in effect as originally issued.

DRAWINGS

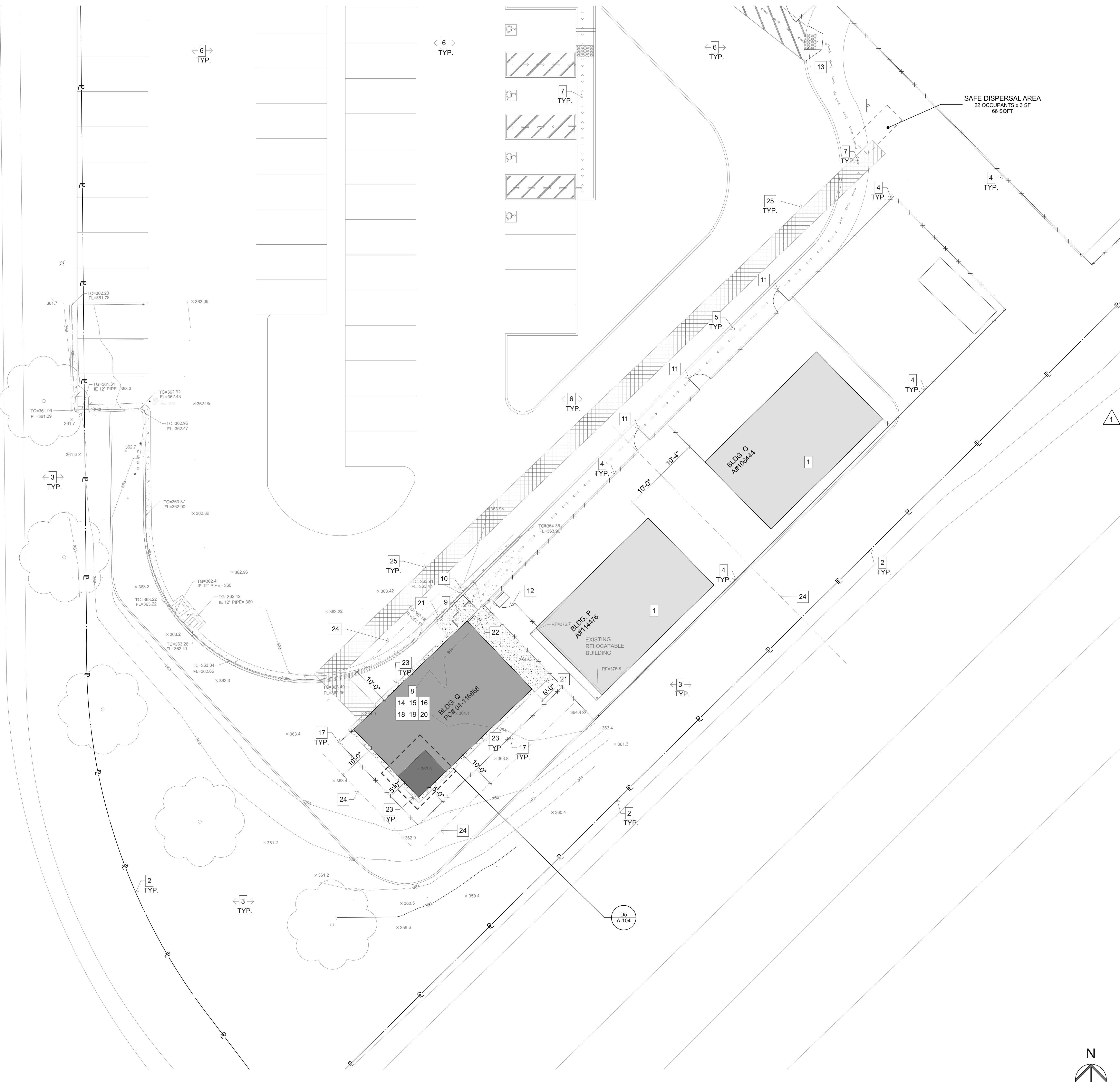
- Item #1. REVISION –Enlarged Site Plan A-103
 - a. Revised keynote 25 to include: **“At fire lane, paving section shall be 3” AC over 11” off aggregate base to match existing”**

Attachments: Revision/Clarification drawings: A-103

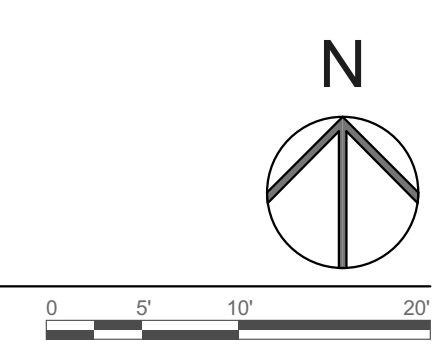


ALPHA STUDIO Design Group
6152 Innovation Way, Carlsbad, CA 92009
P: 760.431.2444 F: 760.431.2440
www.alpha-studio-design.com

C:\Users\chloe\Dropbox (AlphaStudio)\ASDG - Remote\ASDG Projects\19-051 Modular Office at THE Leadership Academy\ArchCAD\19-051_ Modular Office at THE Leadership Academy.tpn
 © 2020 Architects Gallegos + Eckle Inc. dba AlphaStudio Design Group



1 ENLARGED SITE PLAN
 SCALE: 1" = 10'



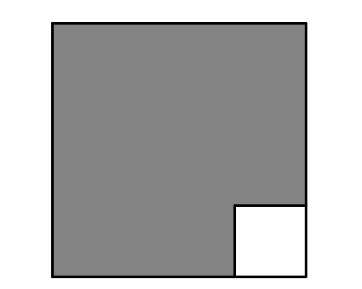
NOTES

1. EXISTING BUILDING TO REMAIN - N.I.C.
2. EXISTING PROPERTY LINE.
3. EXISTING LANDSCAPE AREA TO REMAIN - N.I.C.
4. EXISTING 8'-0" HIGH CHAIN LINK FENCING TO REMAIN.
5. EXISTING CONCRETE PAVING TO REMAIN.
6. EXISTING ASPHALT PAVING TO REMAIN.
7. EXISTING PATH OF TRAVEL PER DSA APPROVED A#04-114476.
8. INSTALLATION OF NEW 20'X40' RELOCATABLE MODULAR OFFICE BUILDING BY SILVER CREEK INDUSTRIES. REFERENCE ATTACHED RELO DRAWINGS PC #04-116668. RELO TO BE PLACED ON CONCRETE STEM WALL/ FOUNDATION CONSTRUCTED PER THE ATTACHED MFR'S DRAWINGS AND DETAILS. GENERAL CONTRACTOR REQUIRED TO PROVIDE WELD PLATES AND FABRICATE PER ATTACHED MANUFACTURER'S DRAWINGS.
9. PROPOSED NEW PATH OF TRAVEL.
10. FLUSH TRANSITION.
11. EXISTING CHAIN LINK PEDESTRIAN GATE TO REMAIN PER DSA APPROVED A#04-114476.
12. EXISTING MAINTENANCE GATE TO REMAIN.
13. EXISTING TRUNCATED DOME IN CURB RAMP PER DSA APPROVED A# 04-114476.
14. NEW UNISEX RESTROOM SIGNAGED. TO BE FURNISHED BY GENERAL CONTRACTOR. REFER TO DETAIL A2 & B2/A-104 FOR SIGNAGE LOCATION AND MOUNTING HEIGHT.
15. NEW CLASSROOM WALL-MOUNTED EXIT SIGNAGE, TO BE FURNISHED BY GENERAL CONTRACTOR. REFER TO DETAIL B1 & A2 /A-104 FOR SIGNAGE LOCATION AND MOUNTING HEIGHTS.
16. PROVIDE 2" THICK 2,500 MIN. PSI CONCRETE PAVING GOPHER SLAB AT UNDERSIDE OF RELOCATABLE BUILDING.
17. NEW 8'-0" HIGH CHAIN LINK FENCING PER DETAIL A4/ A-104.
18. NEW WALL MOUNTED OCCUPANT LOAD SIGNAGE SHALL READ, "MAXIMUM OCCUPANTS:10 PERSONS"
19. NEW WALL MOUNTED ISA SIGNAGE, TO BE FURNISHED BY GENERAL CONTRACTOR. REFER TO DETAIL A2 & D1/A-104 FOR SIGNAGE LOCATION AND MOUNTING HEIGHTS.
20. NEW WALL MOUNTED ROOM NAME SIGNAGE, TO BE FURNISHED BY GENERAL CONTRACTOR. REFER TO DETAIL B1 & A2/ A-104 FOR SIGNAGE LOCATION AND MOUNTING HEIGHTS.
21. NEW 4" THICK CONCRETE PANELS WITH #4 @18" O.C. EA. WAY W/MEDIUM BOOM FINISH PER DETAILS A1 & C2/A-104.
22. NEW 3'-0" WIDE CHAIN LINK MAINTENANCE GATE PER DETAIL A5 & B4/A-104.
23. 12" WIDE CONCRETE MOWCURB AT PERIMETER OF BUILDING.
24. IMAGINARY PROPERTY LINE.
25. CROSS HATCHING INDICATES APPROXIMATE LOCATION OF TRENCH PATCHING, FINISH SURFACE TO MATCH EXISTING ADJACENT SURFACE - REFER TO C-3 AND DETAILS A1/ & B1/A-105. AT FIRE LANE, PAVING SECTION SHALL BE 3" AC OVER 11" OFF AGGREGATE BASE TO MATCH EXISTING.

GENERAL NOTES

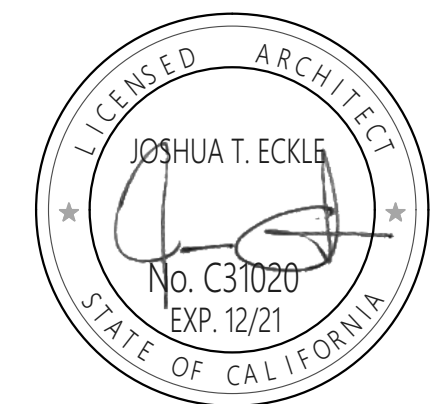
1. ALL LANDSCAPE AREAS, PAVING, AND SURFACING DISTURBED BY THE WORK OF THIS CONTRACT SHALL BE REPAIRED AND/OR REPLACED BY THE CONTRACTOR TO ORIGINAL INDUSTRY STANDARD OF QUALITY.
2. THE EXISTING IRRIGATION SYSTEM SHALL BE MODIFIED TO ACCOMMODATE THE SCOPE OF THE WORK. THE IRRIGATION MODIFICATION SHALL BE SUBMITTED FOR REVIEW AND APPROVAL BY THE ARCHITECT AND SCHOOL DISTRICT PRIOR TO START OF WORK. ADJACENT SURFACES, AS WELL AS PROVIDE FULL COVERAGE IN LANDSCAPE AREAS.

ALPHASTUDIO DESIGN GROUP



6152 INNOVATION WAY
 CARLSBAD, 92009
 760-431-2444
 www.alphastudio-design.com

ARCHITECT OF RECORD



ENGINEER OF RECORD

MODULAR OFFICE AT T.H.E. LEADERSHIP ACADEMY
 TEMPLE HEIGHTS ELEMENTARY SCHOOL

1550 TEMPLE HEIGHTS DR.
 OCEANSIDE, CA 92056
 VISTA UNIFIED SCHOOL DISTRICT
 1234 ARCADIA AVE. VISTA CA 92084

REVISIONS		
MARK	DATE	DESCRIPTION
	04-30-20	DSA OTC
1	07-02-20	ADDENDUM 01

PROJECT NO: 19-051
 MODEL FILE:
 19-051_ Modular Office at THE Leadership Academy.tpn

PLOT DATE:
 6/29/2020

SHEET TITLE

ENLARGED SITE PLAN